

# Bookmarking & Desktop Shortcuts BlueTie Home Login Page

Bookmarking allows you to easily locate your new login page.

The URL we will be bookmarking is: <https://login.bluetiehome.com>

Click on your browser to see instructions particular to that browser.



[Firefox](#)



[Chrome](#)

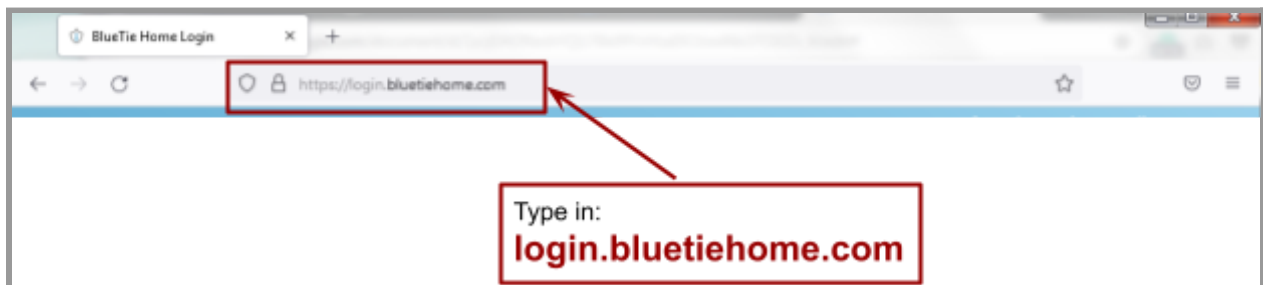


[Edge](#)



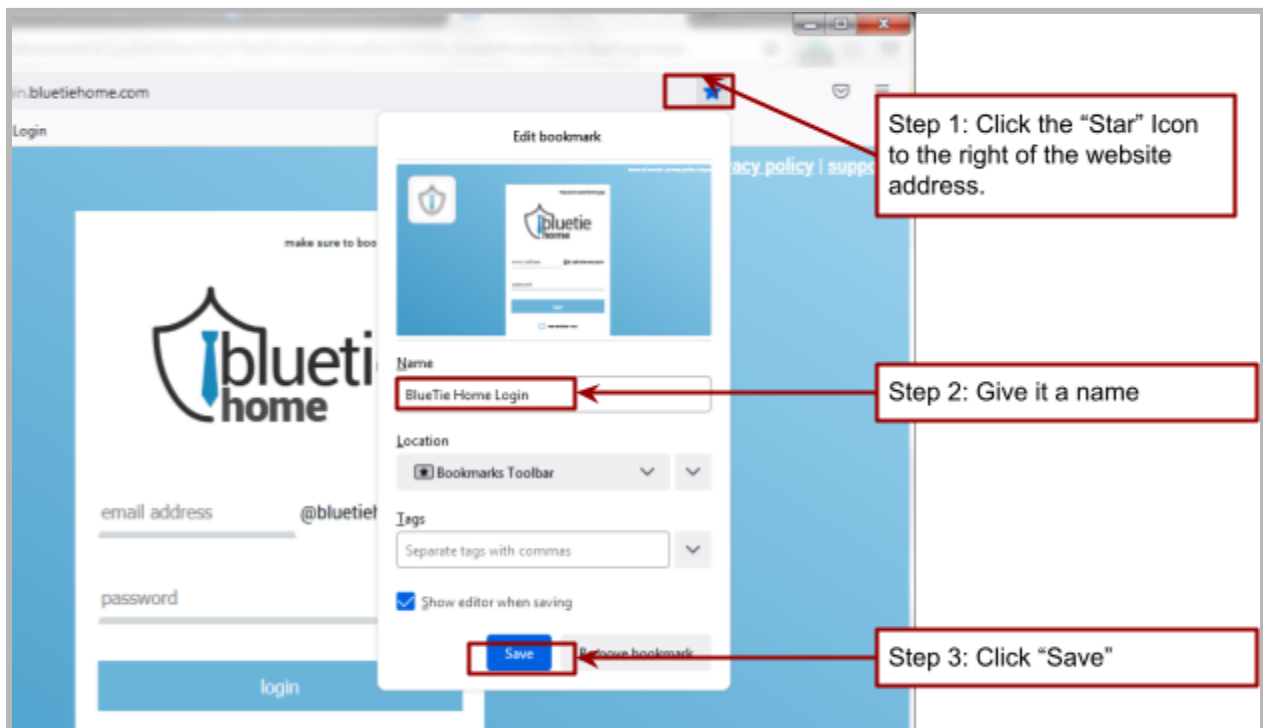
## Firefox Instructions

Step 1: Go to <https://login.bluetiehome.com>



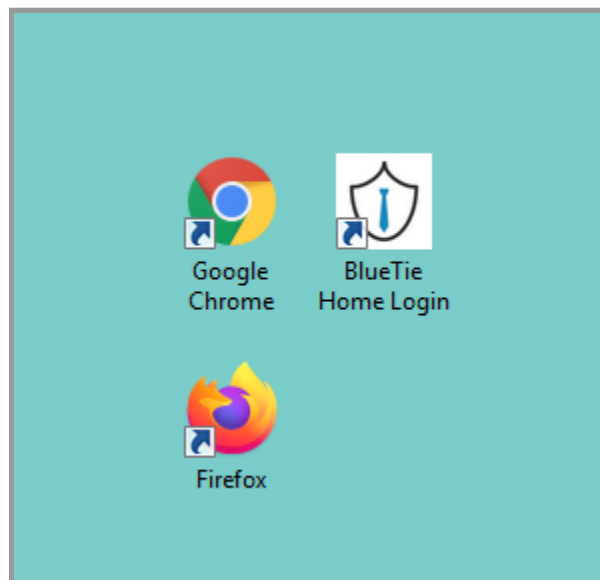
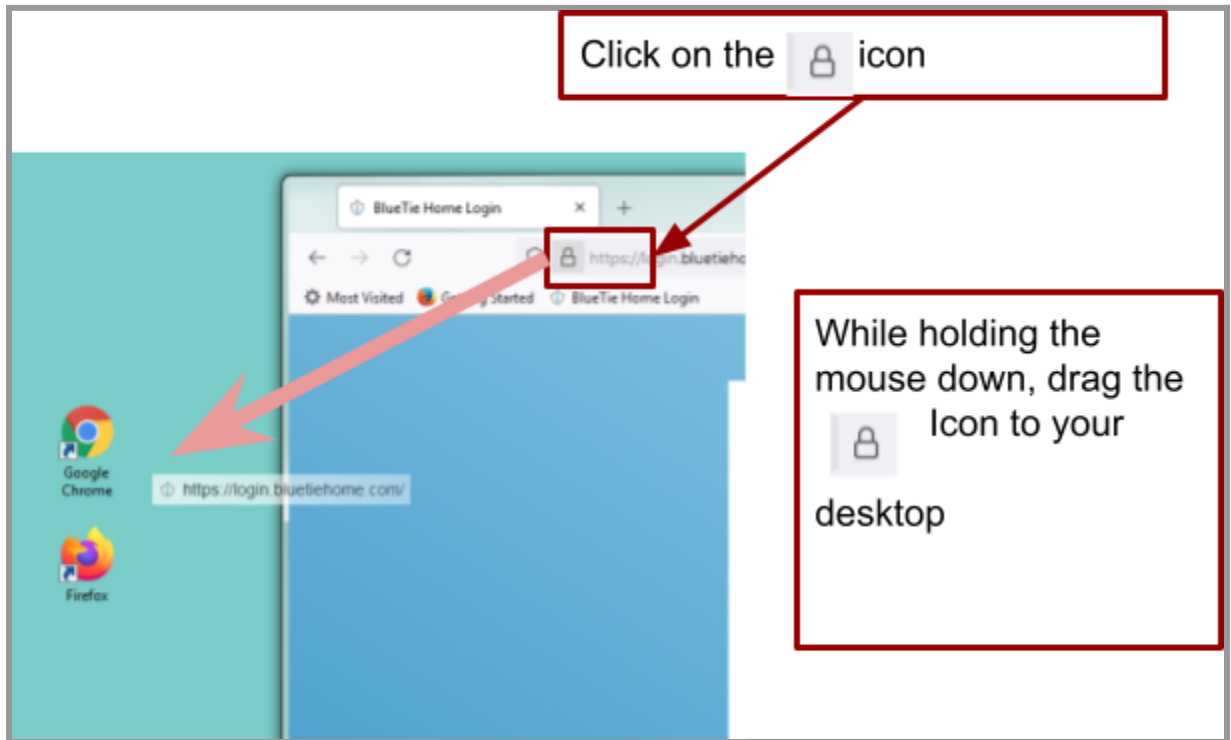
Step 2: Add to Bookmarks

First, Click the “star” icon. It will give you a dropdown menu. From there, Click “Add to bookmark”



### Step 3 (optional) Create Desktop Shortcut

You can make it even easier to find by creating a shortcut on your computer. This allows you to open it the same as your browser, whenever you need it.



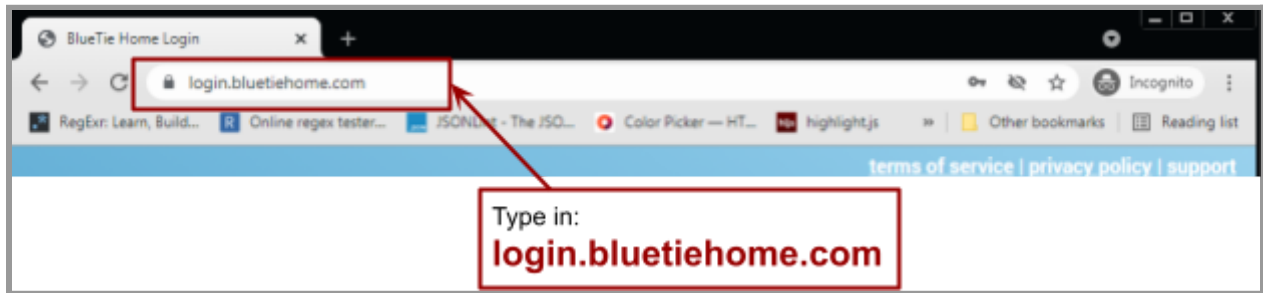
It should now appear on your desktop. **\*\*Note: it may appear with the browser's icon instead of the shield icon. But it will always be labeled with what you chose to call it.**



## Chrome Instructions

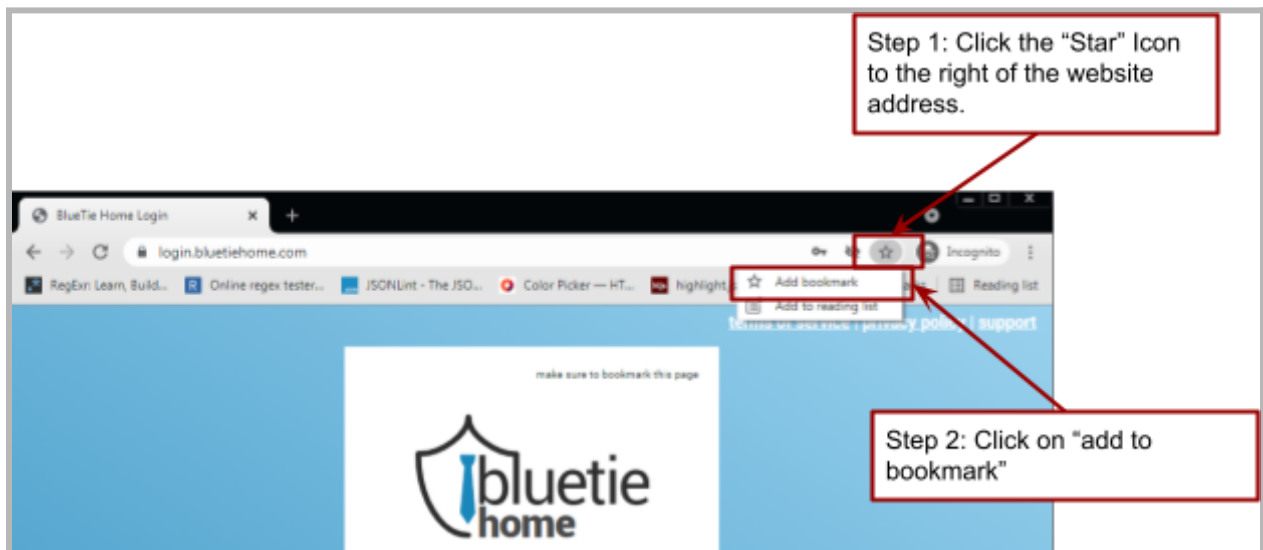
---

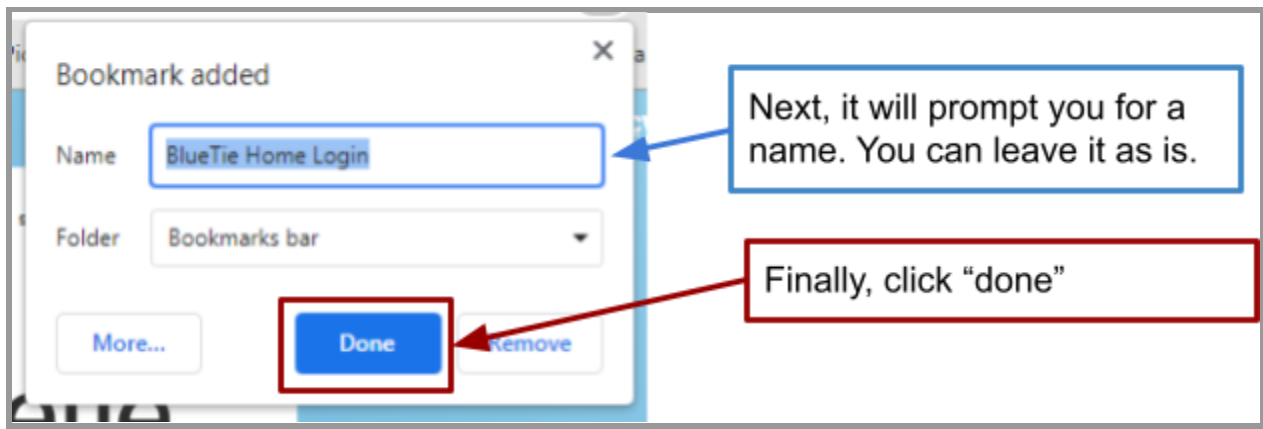
Step 1: Go to <https://login.bluetiehome.com>



Step 2: Add to Bookmarks

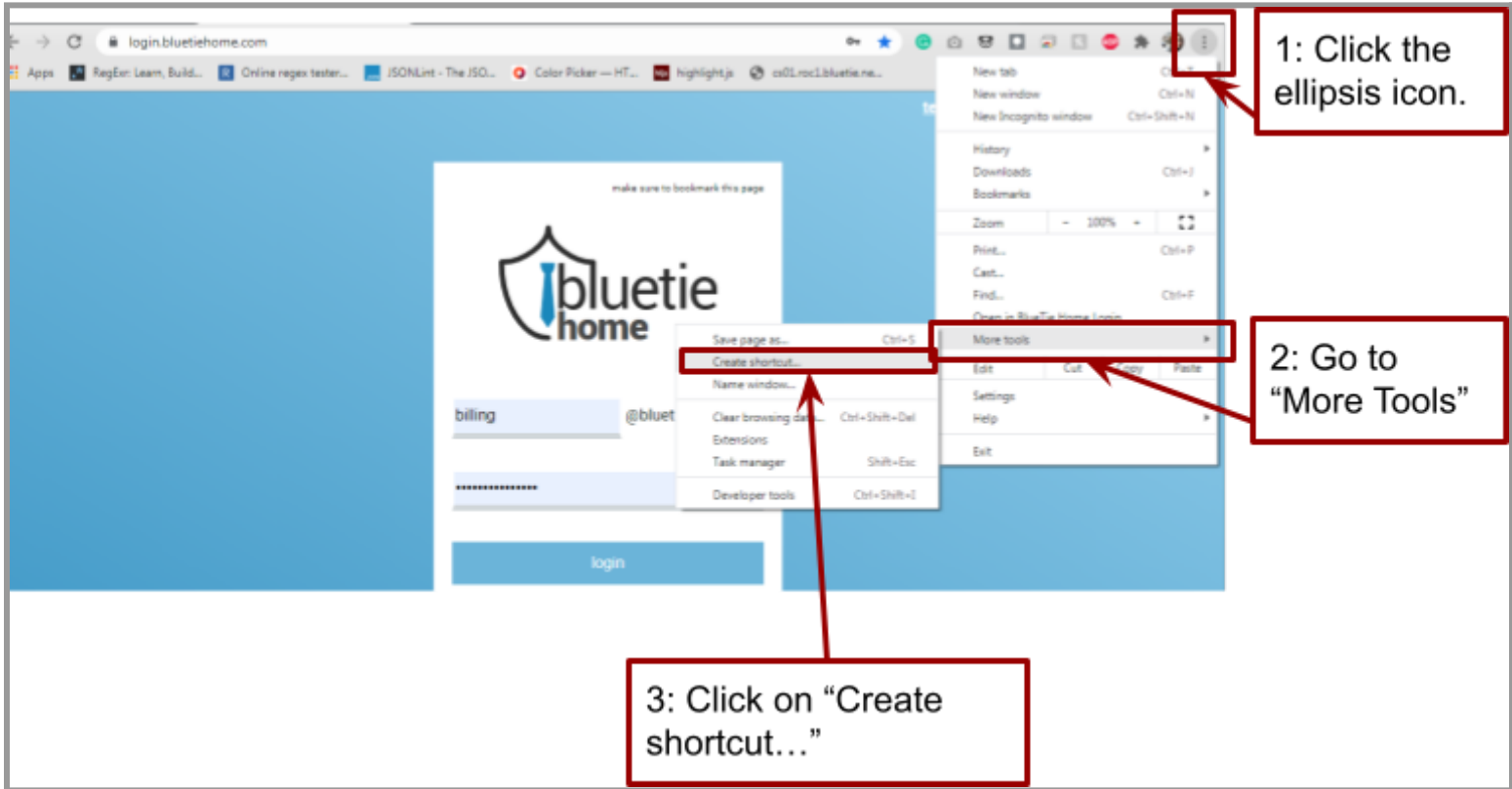
First, Click the “star” icon. It will give you a dropdown menu. From there, Click “Add to bookmark”

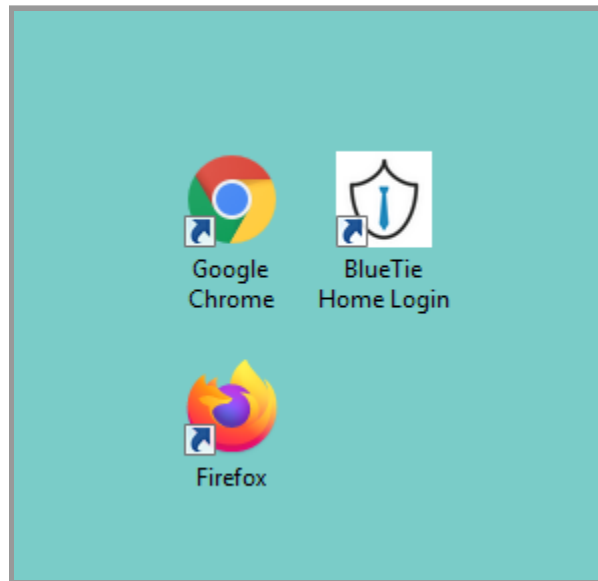




### Step 3 (optional) Create Desktop Shortcut

You can make it even easier to find by creating a shortcut on your computer. This allows you to open it the same as your browser, whenever you need it.





It should now appear on your desktop. *\*\*Note: it may appear with the browser's icon instead of the shield icon. But it will always be labeled with what you chose to call it.*



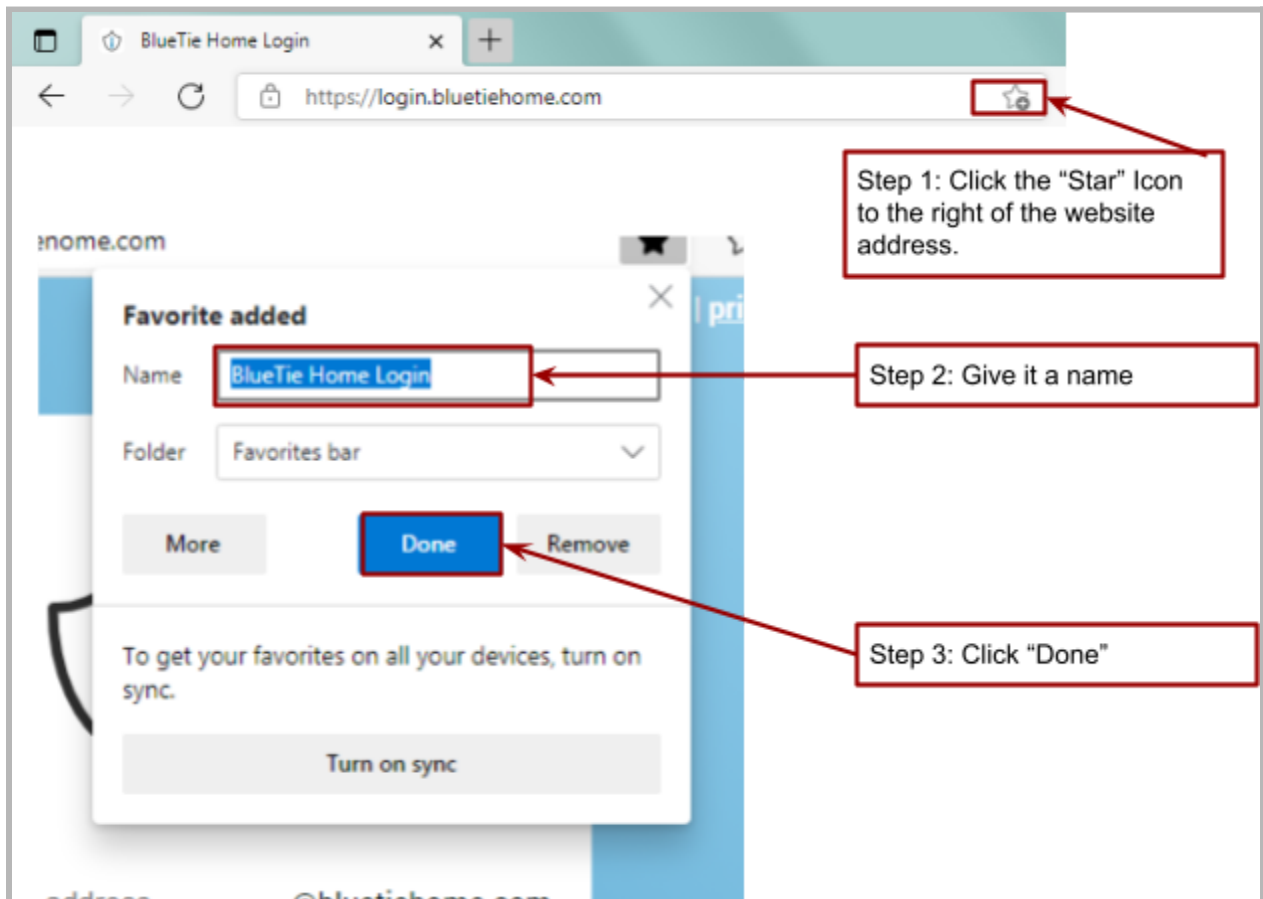
## Edge Instructions

Step 1: Go to <https://login.bluetiehome.com>



Step 2: Add to Bookmarks

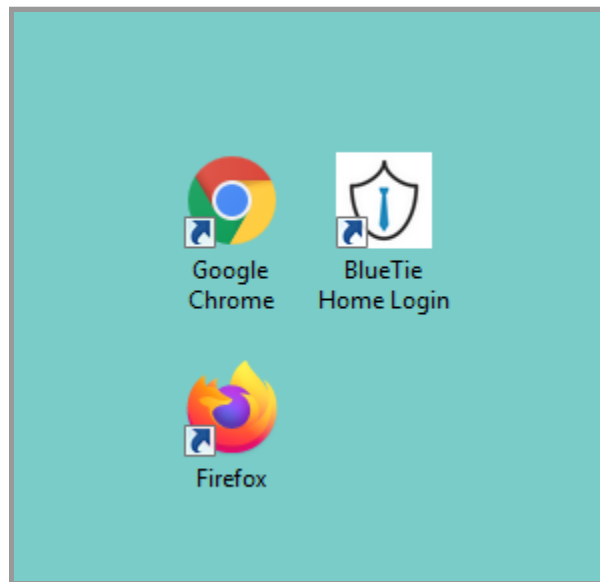
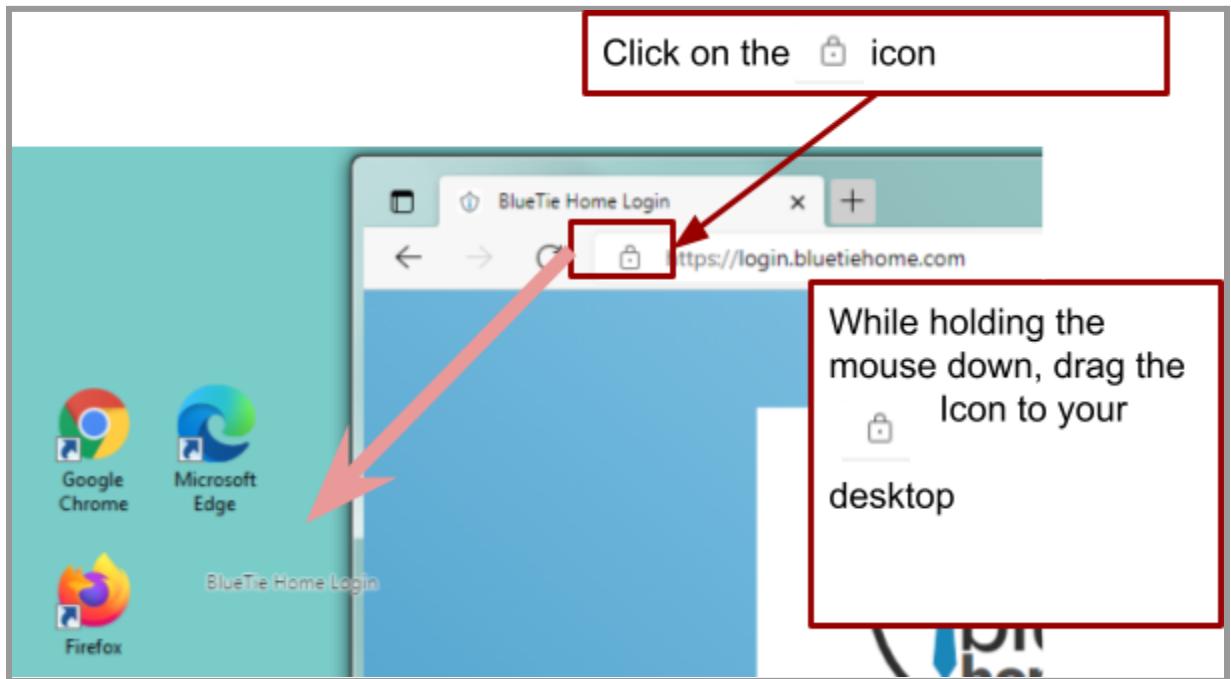
First, Click the “star” icon. It will give you a dropdown menu. From there, Click “Add to bookmark”





### Step 3 (optional) Create Desktop Shortcut

You can make it even easier to find by creating a shortcut on your computer. This allows you to open it the same as your browser, whenever you need it.



It should now appear on your desktop. **\*\*Note: it may appear with the browser's icon instead of the shield icon. But it will always be labeled with what you chose to call it.**