



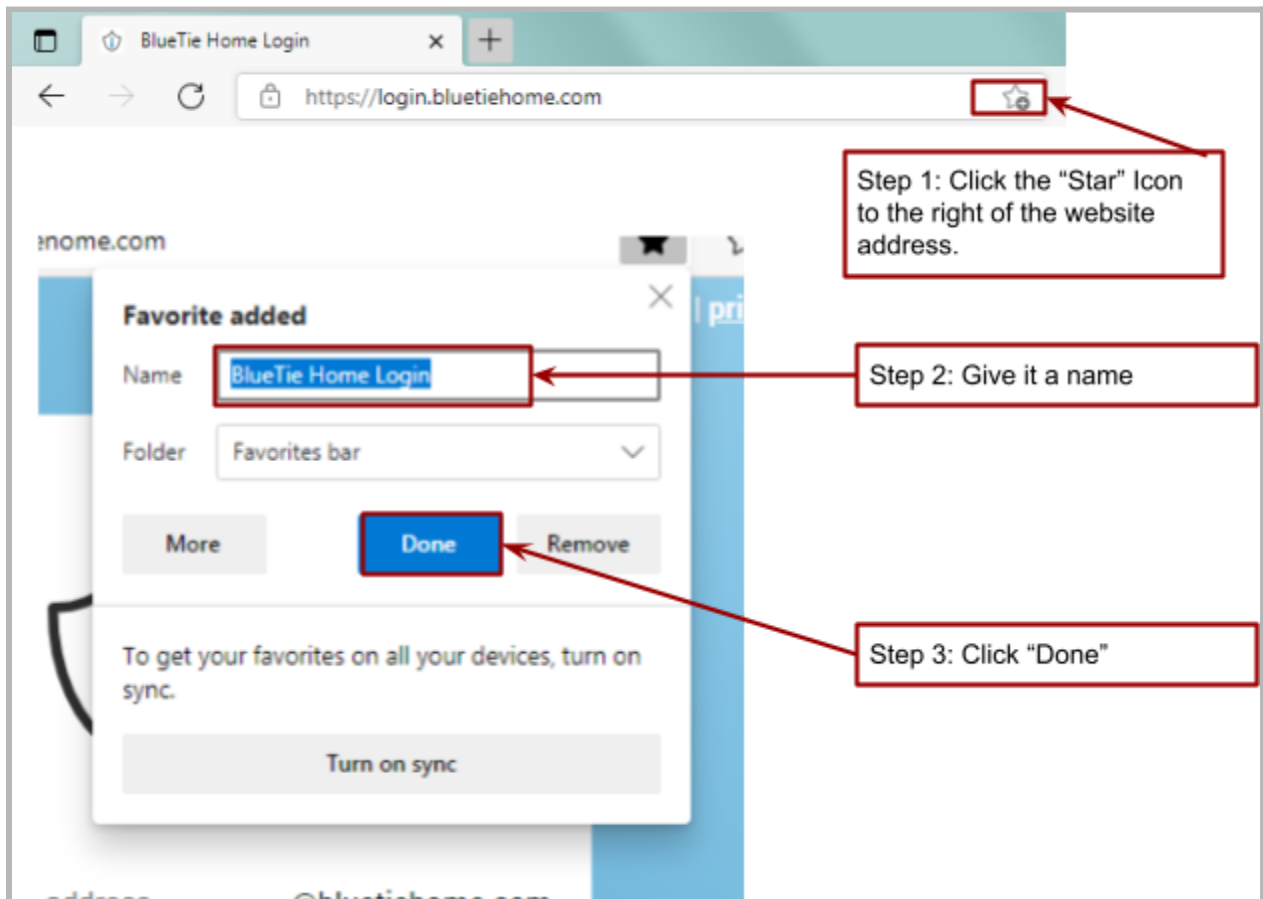
Edge Instructions

Step 1: Go to <https://login.bluetiehome.com>



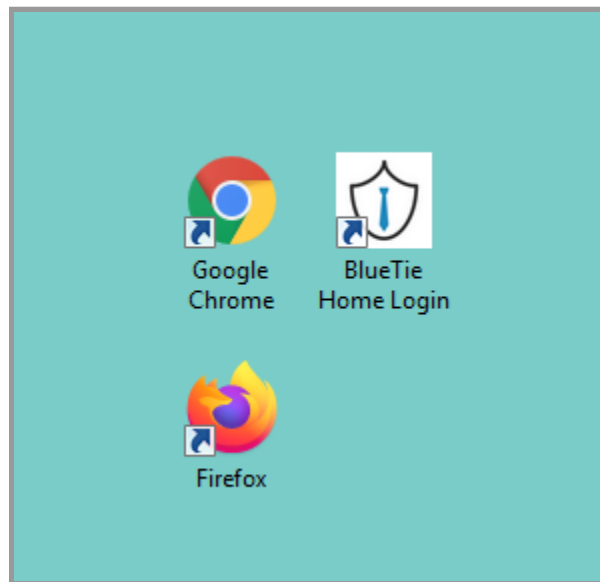
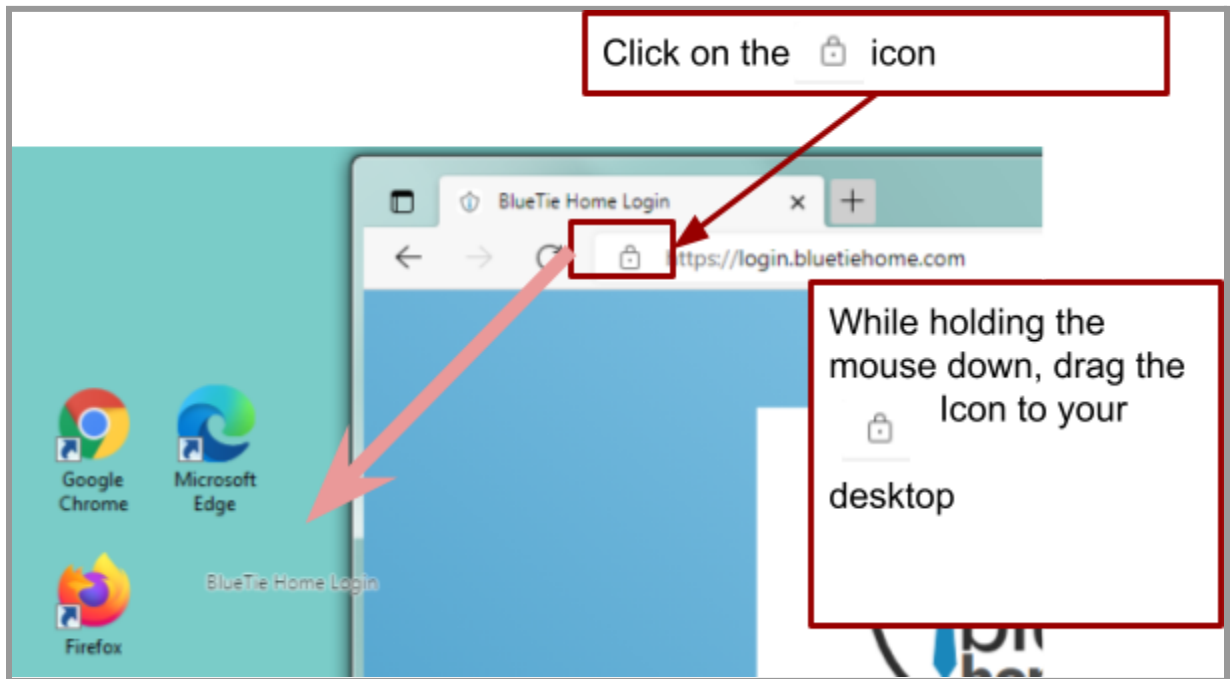
Step 2: Add to Bookmarks

First, Click the "star" icon. It will give you a dropdown menu. From there, Click "Add to bookmark"



Step 3 (optional) Create Desktop Shortcut

You can make it even easier to find by creating a shortcut on your computer. This allows you to open it the same as your browser, whenever you need it.



It should now appear on your desktop. ****Note: it may appear with the browser's icon instead of the shield icon. But it will always be labeled with what you chose to call it.**